

Omnitracs Critical Event Video

Are You Ready to See what Really Happened?

Deciding whether to add video cameras to your existing risk management strategy requires careful consideration. And in a market that seems to provide more functions than benefits, Omnitracs is introducing an option that strikes the right balance between cost and value.

Leverage Your Omnitracs Platform Investment with Critical Event Video

Your current investment in Omnitracs platforms allows us to offer you a fully integrated video solution that doesn't expect you to buy more than what you should have to pay for. By leveraging existing communication services, familiar host applications, and proven infrastructure, Omnitracs Critical Event Video adds a powerful tool with tangible benefits at a price that finally makes sense.

What You Can Expect from Omnitracs Critical Event Video:

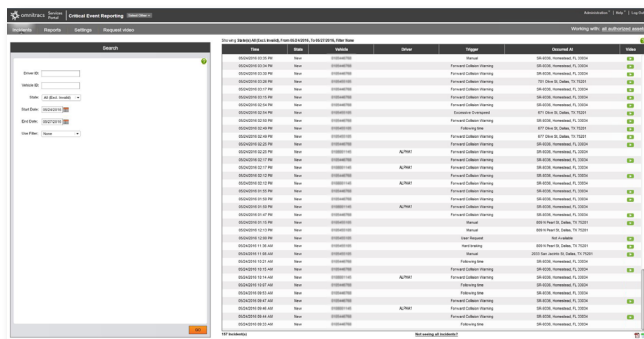
- Fully integrated video solution leverages existing communication plans, familiar Omnitracs applications, and proven infrastructure providing benefits at a realistic cost
- Forward-facing camera that is continuously recording
- Optional inward-facing camera that automatically turns off, ensuring your driver's privacy
- Video that is available within minutes of the triggered event or request
- DVR functionality, which allows you to request video for a specific date and time
- Prequel and sequel features allow you to add clips before and after any existing clip to build a complete timeline
- Extremely configurable — you decide:
 - What types of events trigger video
 - How much video to include with each event, and how long it should be preserved
 - Which users have what access
 - Whether or not to add driver-facing, or install now and activate later
- Include audio with each video, or leave it off entirely
- Secured video access and precise preservation
- Low-cost camera hardware that is simple to install



Omnitracs Critical Event Video Hardware



View of a Hard Braking Event from Forward Facing Camera



Omnitracs Critical Event Video allows you to decide which events trigger video and the video is available to you within minutes of the critical event. You also have the option to request video stored on the camera directly from Omnitracs Critical Event Reporting. And if what you actually need to see happened just before or just after the clip you are reviewing, don't worry — with a simple click, you can request the prequel and the sequel to any existing video to compile a complete timeline.

Learn how you can use our applications, platforms, and services to reduce costs, increase profitability, and stay competitive. Visit www.omnitrac.com and let us show you how you can save time and money.

The Omnitracs Alliance Program facilitates integration of Omnitracs solutions with other leading companies that provide complementary technologies and services. This program taps into the power of integration in order to best meet the needs of our shared customers.

The Omnitracs Services Portal provides access to a suite of web-based fleet management applications, including satellite mapping. Data from the Services Portal can be integrated into your existing enterprise systems.

Omnitracs, LLC is a global pioneer of fleet management, routing and predictive analytics solutions for private and for-hire fleets. Omnitracs' nearly 1,000 employees deliver software-as-a-service-based solutions to help more than 50,000 private and for-hire fleet customers manage nearly 1,500,000 mobile assets in more than 70 countries. The company pioneered the use of commercial vehicle telematics over 25 years ago and serves today as a powerhouse of innovative, intuitive technologies. Omnitracs transforms the transportation industry through technology and insight, featuring best-in-class solutions for compliance, safety and security, productivity, telematics and tracking, transportation management (TMS), planning and delivery, data and analytics, and professional services.



omnitracs
 717 N. Harwood Street
 Suite 1300
 Dallas, Texas 75201
 U.S.A.
 (800) 348-7227
www.omnitracs.com